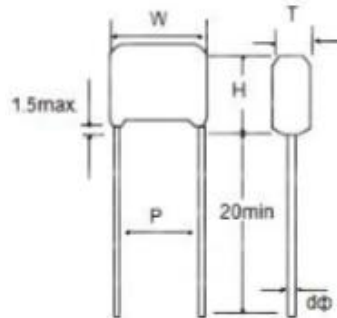




CBB81 {PPS} (高压聚丙烯膜电容器)

Metallized Polypropylene Film Capacitor



CBB81 are non-inductively wound with metallized polypropylene film as dielectric and aluminum foil as the electrode with copper-clad steel leads and epoxy resin

CBB81 为无感结构，用聚丙烯膜作为电介质和铝箔为电极卷绕而成，导线采用镀锡铜包钢线，使用环氧树脂包封。

※SPECIFICATIONS

※技术要求

Rated voltage: 1000V,1200V,1600V,2000V,3000V

额定电压: 1000V,1200V,1600V,2000V,3000V

Capacitance range:0.0010-0.1UF

电容量范围: 0.0010-0.1UF

Capacitance tolerance:±5%(J) ±10%(k)

电容量偏差: ±5%(J) ±10%(k)

Operating temperature:40/85/21

使用温度: 40/85/21

Voltage proof:1.6UR(5s)

耐电压: 1.6UR(5s)

Dissipation Factor:≤0.3%(20℃, 10kHz)

损耗角正切: ≤0.3%(20℃, 10kHz)

※FEATURES

※特点

1.Very low loss at high frequency,suitable for high current

高平损耗小，适用于大电流

2.Excellent frequency and temperature characteristics

优异的高频，温度特性

3.High insulation resistance,self-healing effect

绝缘电阻高，寿命长

4.Widely used in high frequency,DC,AC and pulse circuits

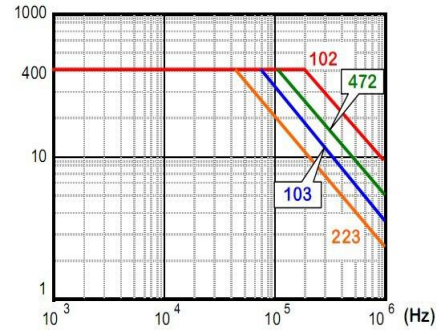
广泛应用于高频，直流，交流和脉冲电路中



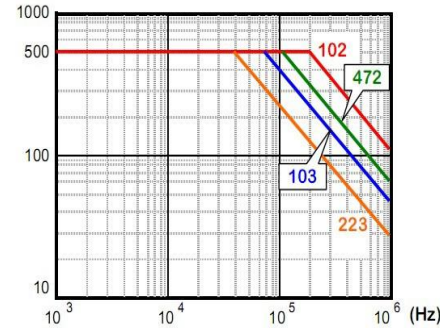
CBB81{PPS} (高压聚丙烯膜电容器)

Metallized Polypropylene Film Capacitor

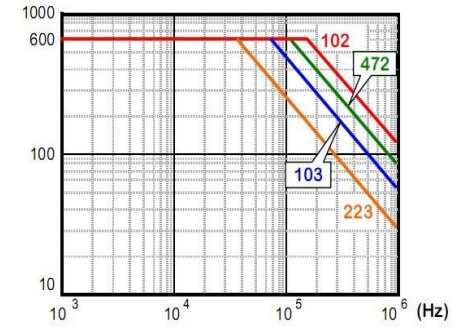
VAC 1000VDC / 400VAC



VAC 1600VDC / 500VAC



VAC 2000VDC / 600VAC



Part Number	Rated Cap.	1000VDC(1000Vo-p max)					Part Number	Rated Cap.	1600VDC(1400Vo-p max)					Part Number	Rated Cap.	2000VDC(1600Vo-p max)				
		W	H	T	P	d			W	H	T	P	d			W	H	T	P	d
		max	max	max	±1.0	±0.05			max	max	max	±1.0	±0.05			max	max	max	±1.0	±0.05
STCBB81102□3AL15	1000pF	18.0	12.0	7.0	15.0	0.8	STCBB81102□3CL15	1000pF	18.0	12.0	7.0	15.0	0.8	STCBB81102□3DL15	1000pF	18.0	12.5	7.5	15.0	0.8
STCBB81122□3AL15	1200pF	18.0	12.5	7.0	15.0	0.8	STCBB81122□3CL15	1200pF	18.0	12.5	7.0	15.0	0.8	STCBB81122□3DL15	1200pF	18.0	13.0	8.0	15.0	0.8
STCBB81152□3AL15	1500pF	18.0	13.0	7.5	15.0	0.8	STCBB81152□3CL15	1500pF	18.0	13.0	7.5	15.0	0.8	STCBB81152□3DL15	1500pF	18.0	13.5	8.5	15.0	0.8
STCBB81182□3AL15	1800pF	18.0	13.5	8.0	15.0	0.8	STCBB81182□3CL15	1800pF	18.0	13.5	8.0	15.0	0.8	STCBB81182□3DL15	1800pF	18.0	14.0	9.5	15.0	0.8
STCBB81222□3AL15	2200pF	18.0	14.0	9.0	15.0	0.8	STCBB81222□3CL15	2200pF	18.0	14.0	9.0	15.0	0.8	STCBB81222□3DL15	2200pF	18.0	15.0	10.0	15.0	0.8
STCBB81272□3AL15	2700pF	18.0	14.5	9.5	15.0	0.8	STCBB81272□3CL15	2700pF	18.0	14.5	9.5	15.0	0.8	STCBB81272□3DL15	2700pF	18.0	16.0	10.5	15.0	0.8
STCBB81332□3AL15	3300pF	18.0	15.0	10.0	15.0	0.8	STCBB81332□3CL15	3300pF	18.0	15.5	10.5	15.0	0.8	STCBB81332□3DL15	3300pF	18.0	16.5	11.5	15.0	0.8
STCBB81362□3AL15	3600pF	18.0	15.5	10.0	15.0	0.8	STCBB81362□3CL20	3600pF	24.0	14.0	8.5	20.0	0.8	STCBB81362□3DL20	3600pF	24.0	15.0	9.0	20.0	0.8
STCBB81392□3AL15	3900pF	18.0	16.0	10.0	15.0	0.8	STCBB81392□3CL20	3900pF	24.0	14.5	9.0	20.0	0.8	STCBB81392□3DL20	3900pF	24.0	15.5	9.5	20.0	0.8
STCBB81432□3AL15	4300pF	18.0	16.0	10.5	15.0	0.8	STCBB81432□3CL20	4300pF	24.0	15.0	9.5	20.0	0.8	STCBB81432□3DL20	4300pF	24.0	16.5	9.5	20.0	0.8
STCBB81472□3AL20	4700pF	24.0	14.0	8.0	20.0	0.8	STCBB81472□3CL20	4700pF	24.0	15.5	10.0	20.0	0.8	STCBB81472□3DL20	4700pF	24.0	17.0	10.0	20.0	0.8
STCBB81512□3AL20	5100pF	24.0	14.5	8.5	20.0	0.8	STCBB81512□3CL20	5100pF	24.0	16.0	10.0	20.0	0.8	STCBB81512□3DL20	5100pF	24.0	17.5	10.5	20.0	0.8
STCBB81562□3AL20	5600pF	24.0	15.5	9.0	20.0	0.8	STCBB81562□3CL20	5600pF	24.0	17.0	10.5	20.0	0.8	STCBB81562□3DL20	5600pF	24.0	18.0	11.0	20.0	0.8
STCBB81602□3AL20	6000pF	24.0	16.0	9.5	20.0	0.8	STCBB81602□3CL20	6000pF	24.0	17.5	10.5	20.0	0.8	STCBB81602□3DL22	6000pF	26.0	17.0	10.5	22.5	0.8
STCBB81622□3AL20	6200pF	24.0	16.5	10.0	20.0	0.8	STCBB81622□3CL20	6200pF	24.0	18.0	11.0	20.0	0.8	STCBB81622□3DL22	6200pF	26.0	17.5	11.0	22.5	0.8
STCBB81682□3AL20	6800pF	24.0	17.0	10.5	20.0	0.8	STCBB81682□3CL22	6800pF	26.0	17.0	9.5	22.5	0.8	STCBB81682□3DL22	6800pF	26.0	18.0	11.5	22.5	0.8
STCBB81752□3AL20	7500pF	24.0	17.5	10.5	20.0	0.8	STCBB81752□3CL22	7500pF	26.0	17.5	10.5	22.5	0.8	STCBB81752□3DL22	7500pF	26.0	18.5	12.0	22.5	0.8
STCBB81822□3AL20	8200pF	24.0	18.0	10.5	20.0	0.8	STCBB81822□3CL22	8200pF	26.0	18.0	11.0	22.5	0.8	STCBB81822□3DL22	8200pF	26.0	18.5	12.5	22.5	0.8
STCBB81912□3AL20	9100pF	24.0	18.0	10.5	20.0	0.8	STCBB81912□3CL22	9100pF	26.0	18.5	11.5	22.5	0.8	STCBB81912□3DL22	9100pF	26.0	19.0	13.0	22.5	0.8
STCBB81103□3AL20	0.010uF	24.0	18.5	11.0	20.0	0.8	STCBB81103□3CL22	0.010uF	26.0	19.0	12.0	22.5	0.8	STCBB81103□3DL22	0.010uF	26.0	20.0	13.5	22.5	0.8
STCBB81123□3AL20	0.012uF	24.0	18.5	11.0	20.0	0.8	STCBB81123□3CL27	0.012uF	32.0	18.0	11.0	27.5	0.8	STCBB81123□3DL27	0.012uF	32.0	19.0	12.5	27.5	0.8
STCBB81153□3AL20	0.015uF	24.0	18.5	11.0	20.0	0.8	STCBB81153□3CL27	0.015uF	32.0	20.5	11.5	27.5	0.8	STCBB81153□3DL27	0.015uF	32.0	20.5	13.5	27.5	0.8
STCBB81183□3AL20	0.018uF	24.0	18.5	11.5	20.0	0.8	STCBB81183□3CL27	0.018uF	32.0	21.0	12.5	27.5	0.8	STCBB81183□3DL27	0.018uF	32.0	22.0	14.0	27.5	0.8
STCBB81223□3AL27	0.022uF	32.0	17.5	10.0	27.5	0.8	STCBB81223□3CL27	0.022uF	32.0	24.0	14.0	27.5	0.8	STCBB81223□3DL27	0.022uF	32.0	24.0	15.5	27.5	0.8
STCBB81273□3AL27	0.027uF	32.0	18.0	10.5	27.5	0.8	STCBB81273□3CL27	0.027uF	32.0	25.5	15.5	27.5	0.8	STCBB81273□3DL27	0.027uF	32.0	26.0	16.0	27.5	0.8
STCBB81333□3AL27	0.033uF	32.0	20.0	11.0	27.5	0.8	STCBB81333□3CL27	0.033uF	32.0	27.0	16.5	27.5	0.8	STCBB81333□3DL27	0.033uF	32.0	27.5	17.0	27.5	0.8
STCBB81363□3AL27	0.036uF	32.0	20.5	11.5	27.5	0.8	STCBB81363□3CL27	0.036uF	32.0	27.5	17.5	27.5	0.8	STCBB81363□3DL27	0.036uF	32.0	28.5	18.5	27.5	0.8
STCBB81393□3AL27	0.039uF	32.0	21.0	12.0	27.5	0.8														
STCBB81473□3AL27	0.047uF	32.0	21.5	12.5	27.5	0.8														
STCBB81563□3AL27	0.056uF	32.0	22.0	13.0	27.5	0.8														
STCBB81683□3AL27	0.068uF	32.0	23.0	14.0	27.5	0.8														
STCBB81823□3AL27	0.082uF	32.0	23.5	14.5	27.5	0.8														
STCBB81104□3AL27	0.10uF	32.0	24.0	15.0	27.5	0.8														

Unit:mm

<http://www.stcapacitors.com>